



WALTON

HALL AND GARDENS

ACTIVITY PACK

Come and explore! Characters who have lived and worked here would like to show you round.

Walton Hall and Gardens has been a place of adventures and family fun since 1836 when the Greenall family first called it home.

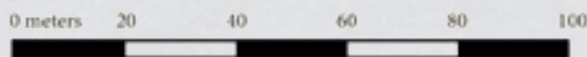
Start your own adventure...



WALTON
HALL AND GARDENS



Key



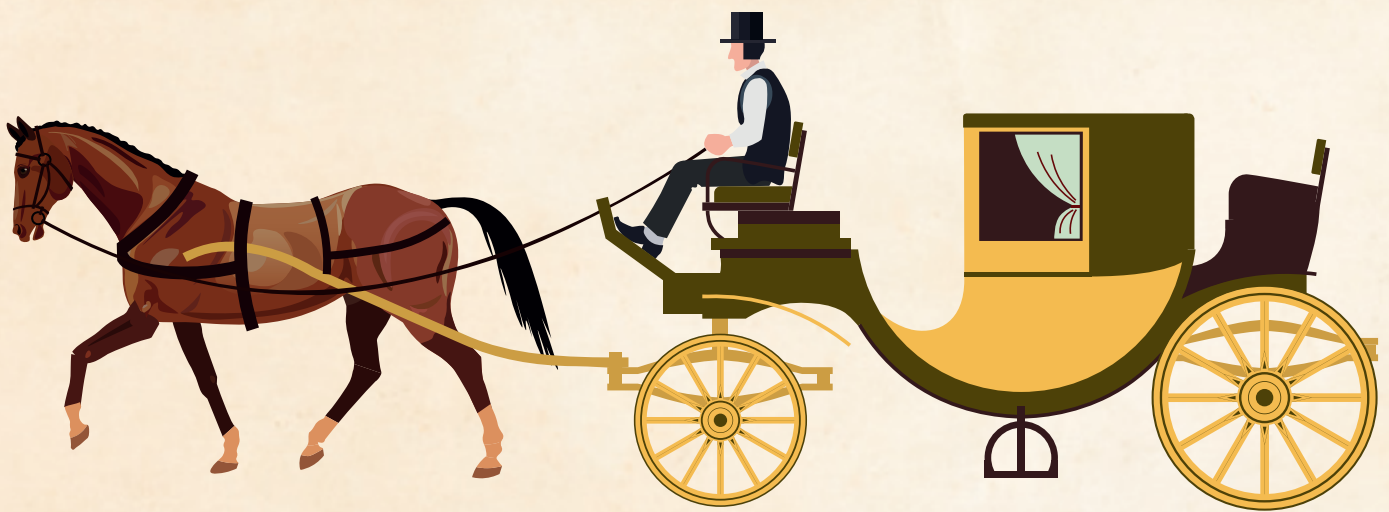
- | | | |
|------------------------|-----------------------------------|---------------|
| Formal Gardens | Adventure Golf and Pitch 'N' Putt | Toilets |
| The Hall | Children's Zoo | Heritage Café |
| The Conservatory Range | Bowls | Parking |
| The Stables | Children's Playground | |

Spot the difference

“ Pleased to meet you. I’m Reg Turner, the stud groom from the 1930s. It was my job to look after the horses in the stables here. I had 17 stable lads grooming and feeding Lord Daresbury’s horses. If you look above the stables you’ll see the tiny rooms where the lads lived. I kept my eye on them, made sure they weren’t causing any mischief... but it looks as though someone has been tinkering! ”



Can you spot the five differences
in the pictures below?!



Picture perfect

“ Hello there. I’m Lord Daresbury, but you can call me Gilbert. I used to live here at Walton Hall with my wife Frances. Together we had the splendid glasshouses built. That was over 100 years ago now!

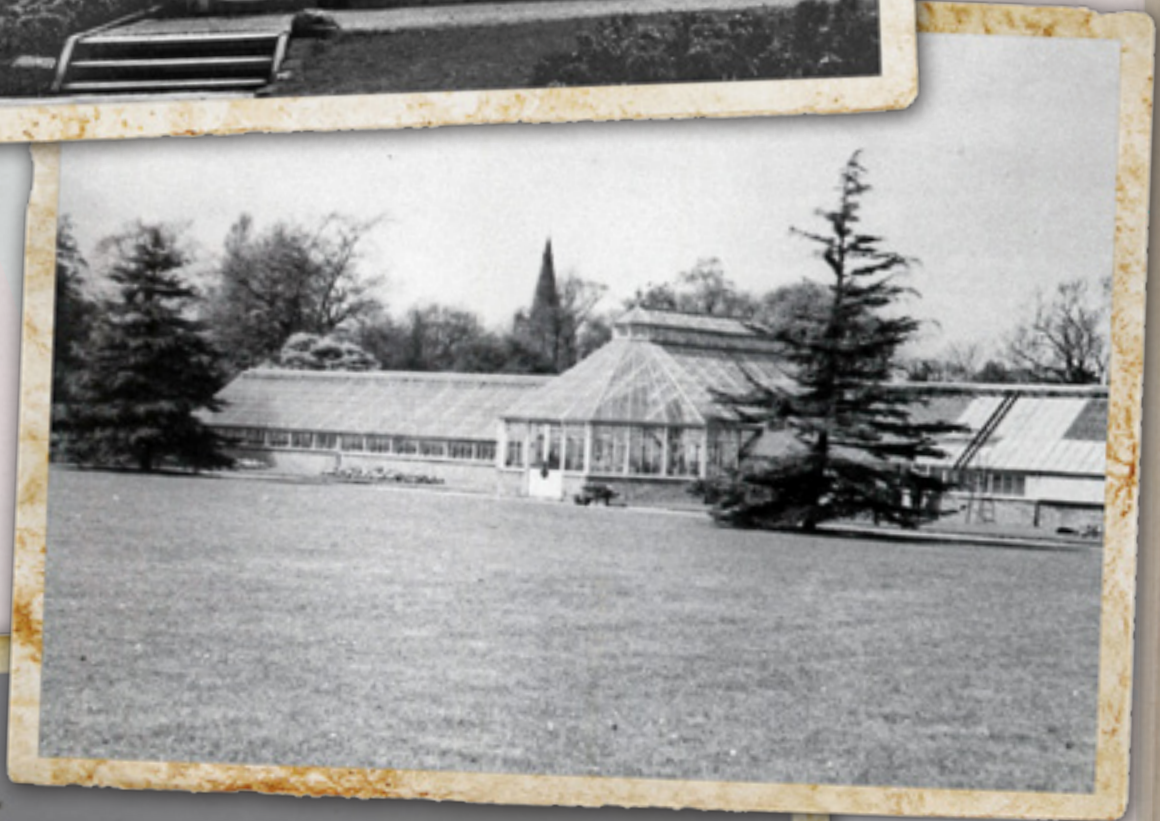
We grew exotic prizewinning plants and thousands of people came to see them during our open days. My one regret is that all our photographs are in black and white.

I dream of seeing them in vibrant colour. ”

Can you discover where my old pictures were taken and recreate them?

Make a viewfinder with your hands, or snap it with a camera.







Crossword trail

“ I’m taking a rest from the spring cleaning! I’m the odd job man, Tom Rowe. I’ve been working here since the 1930s. Join me on a wander from the conservatory up to the hall. I’ve got some quiz questions for you along the way. ”



Follow the trail of clues to find the answers to the crossword. Start where **X** marks the spot.

- 1 Feeling peckish? **Rearrange the clue to work out which tasty tropical yellow fruit we used to grow in the conservatory: N A A N A B**
- 2 I love the colour they have painted the conservatory’s ironwork. **What colour would you call it?**
Hint: the woodwork is white, but the ironwork is more colourful.
- 3 **What do you call those exotic pets can you see swimming near the surface of the pond? If they’re hiding, find the nearest information board to help you solve the clue.**
- 4 ‘The more it rains the faster I flow. I start at the top and down I go!’ **Who designed this feature?**
Hint: find the plaque near the information board.
- 5 Look up towards the hall. I have a face that never frowns, hands that do not wave, no mouth but a familiar sound. I can’t walk but I move around. **What am I?**

Playtime

Have you ever played human bowls?
Edward and I had so much fun playing
on the lawn dodging the cows. There's
a proper bowling green now, but that
used to be where the Kerry cattle
grazed. That was way back in the 1910s.
I'm Gilbert by the way, Edward's brother.

Join in! I'll tell you the rules...



HOW TO PLAY:

The aim of the game is to be the closest person to the jack.
You get two attempts to get as close as you can.

- 1 Pick an object to be your jack. This is your target.
- 2 Spread out. Close your eyes everyone, no peeking!
Now spin around...
- 3 Walk towards where you think the jack is.
- 4 Open your eyes. Did you get close?
- 5 Try again to get next to the jack.



If you bump into another player they get an extra turn.

Edward & Gilbert Greenall with their mother Frances



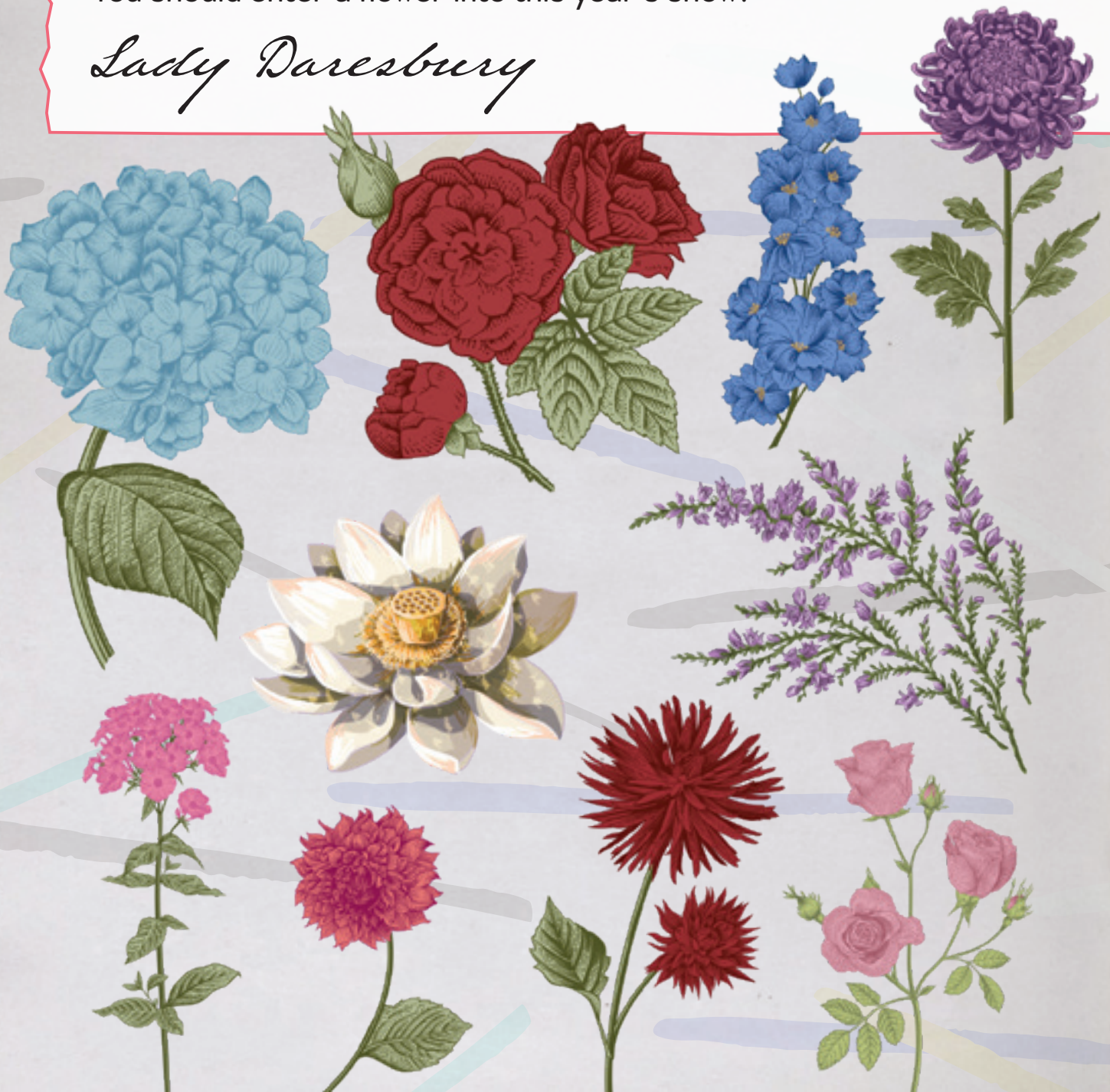
Walton's Kerry cattle grazing on what is now the bowling green © Warrington Museum

Design a flower

What a lucky lady I am, I've had two flowers named after me! Gardening is my passion and I just can't help myself from collecting plants from all around the world!

I love to show off the gardens. One year I invited local people to visit Walton Gardens and 45,000 people came! I also help to organise 'The Walton Show', a wonderful showcase of prize-winning animals, perfect produce and grand floral displays. You should enter a flower into this year's show!

Lady Daresbury





Design your own flower to enter into the Walton Show
and choose who you would like to name it after.

My flower is called:

.....

I named it after:

.....

Nature hunt

Maintaining Walton's delightful gardens isn't easy. I need the help of 26 gardeners and a pony-drawn lawn mower to keep it looking splendid.

I've written a checklist of things I want to find in the gardens but all my gardeners are busy. Can you help to find everything on my list?



Tick the box when you've spotted them
and write down what you've found.

The flower you think would win the show

.....

Something bees and insects would love

.....

Something the colour of your eyes

.....

Something smaller than a £1 coin



.....

A seed

.....

Something that's been nibbled

.....

Something which smells lovely

.....

A tree taller than the Hall

.....





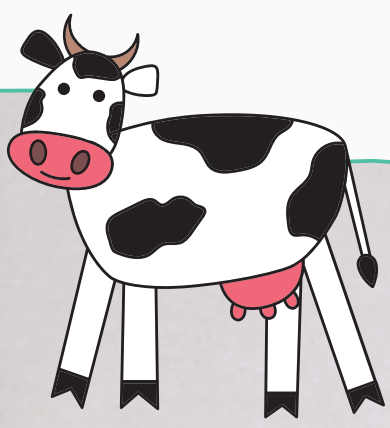
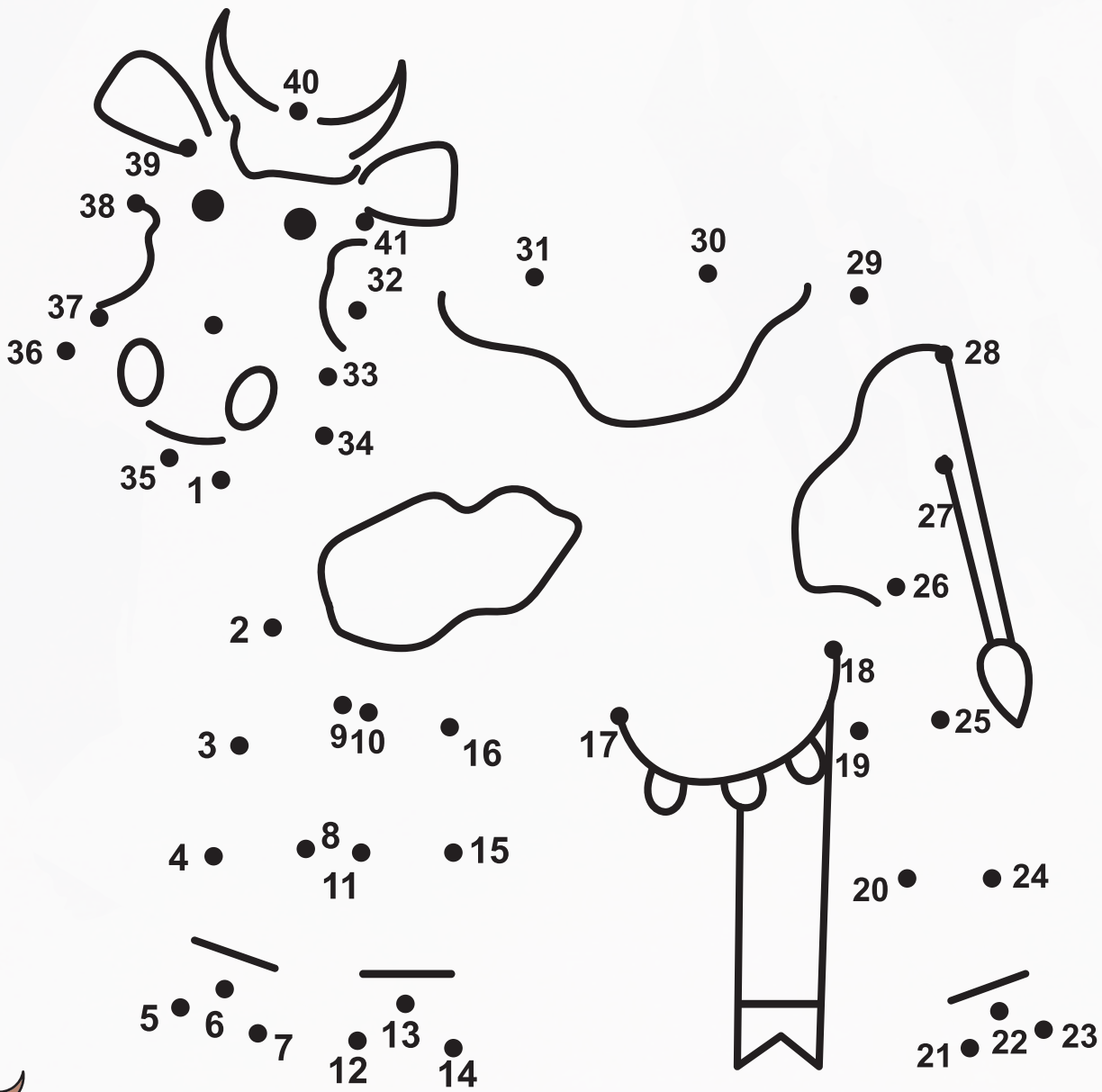
CHILDREN'S PLAYGROUND

Trace my steps...

I'm Chloe, the cream of the crop cow. I want to enter the Walton Show and with your help I'm udderly sure I'll win a prize! Connect my dots and colour me in. Look around for inspiration in shapes, patterns and colours. MOOOO!



Non-Pedigree Dairy Shorthorns in the Park



Outside the playground, stand with your back on the fence in front of the swings, look out to the lawn. This is where I used to graze. MOOve forwards, up towards the Adventure Golf for 50 steps. What do you see? Can you guess what I used this for?

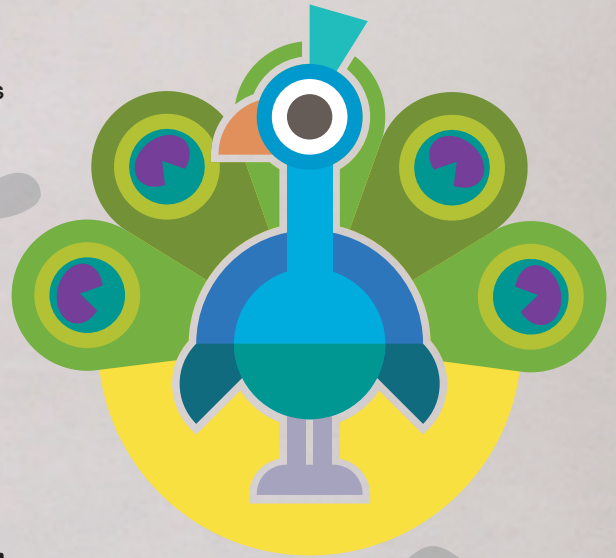


CHILDREN'S ZOO



Entrance

*Did you know scenes for the BBC One TV series 'Our Zoo' was filmed here at Walton Gardens?



1, 2, 3, count with me

Don't you just love my tail? One, two, three, four, five magnificent feathers. I love three things: beautiful colours, tasty berries and numbers! My friends and I have a quiz for you. Count along!

1 When you walk through the entrance to the zoo, how many animals are on the gates?

2 How many different types of animals are there on the gates?

3 Can you spot the beautiful house where the doves nest?
How many openings are there for the birds?

4 What are those big woolly animals with long necks?
How many of these fluffy animals live at the zoo?

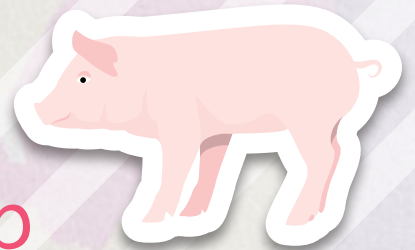
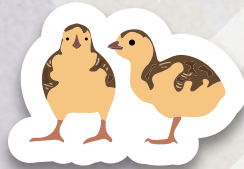
5 Some animal statues have made it onto the island in the pond.
How many of them can you count?

What's your name little one?

I love it when baby animals are born at Walton...
so cute and more things to count! But it's always terribly
embarrassing when I forget their names. I know a baby
cat is a kitten and a baby dog is called a puppy. Can you
connect the baby animal names to the matching picture?



Duckling

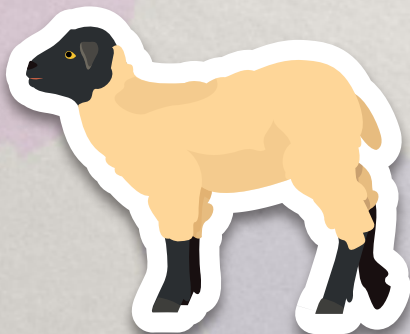


Lamb



Peachick

Kitten

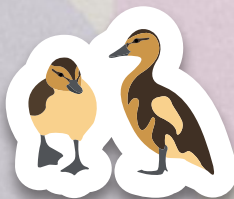


Cria

Kid



Piglet



When you leave the zoo don't forget to use the handwash facilities

Answers...

Crossword trail

- 1) Banana
- 2) Blue
- 3) Terrapin
- 4) JohnBell
- 5) Clock
- 6) Bubbles
- 7) Bandstand
- 8) Trough

Jumbled word:

Greenall

Trace my steps:

Cows used the stone post to scratch themselves when they had an itch.

1, 2, 3, count with me

1. There are **10** animals all together
2. **6** different types (peacock, pig, horse, goat, rabbit and donkey)
3. The dovehouse has **9** holes
4. **3** alpacas — Jim, Topaz & Mally
5. There are **8** statues

What's your name little one?

Peacock = Peachick

Pig = Piglet

Alpaca = Cria

Goat = Kid

Squirrel = Kitten

Duck = Duckling


Sheep = Lamb



Walton Lea Road, Higher Walton
Warrington, Cheshire WA4 6SN

01925 262908

waltonhallgardens.co.uk

 @Walton_Gardens

 Walton Hall and Gardens

 @waltonhallgardens

